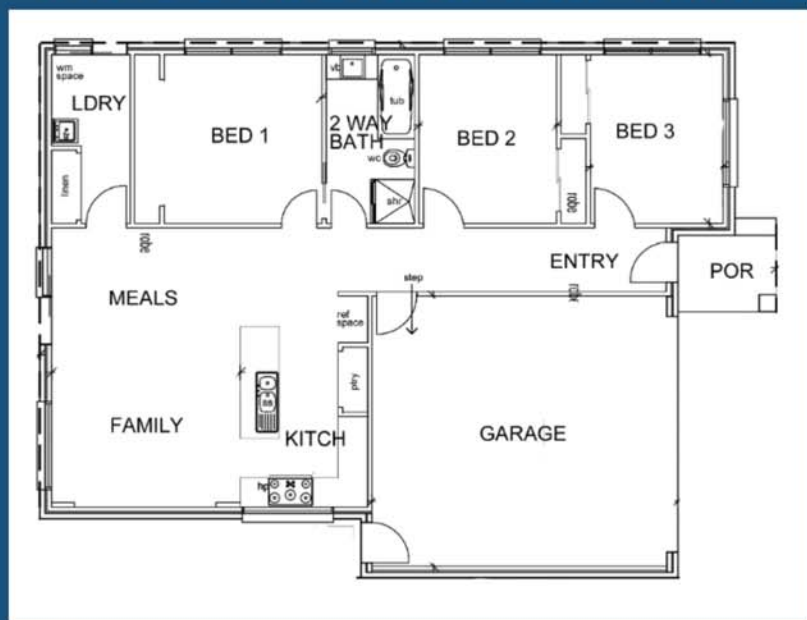




Lot 2756 Riverwalk Estate Werribee

- Fixed Site Costs (P class)
- Front & rear landscaping #
- Letter box and clothesline
- Side and rear fence
- Alarm system
- Ducted heating and evaporative cooling
- Floating flooring to kitchen/family
- Caesarstone benchtops throughout
- Gas cooker & Rangehood
- Stainless steel dishwasher
- Colorbond garage door with remotes
- LED Downlights throughout
- Window locks and Flyscreens to all openable windows
- Colored concrete to driveway and porch
- Blockout blinds throughout
- Ceiling height 2740mm throughout (2440 to upper floor)



Land: 329 sqm Width: 16m Length: 21m

House: 15.4sq 141.21sqm 3 Bed 1 Bath 2 Garage

House and Land \$467,480

Land Price \$270,000

Front landscaping is to be provided by Riverwalk and not included in building price

*Disclaimer: This information has been carefully compiled and is not intended to be treated as a warranty or promise as to the correctness of the information. Interested parties should undertake independent enquiries and investigations to satisfy themselves that any details herein are true and correct. Figures and information may be subject to change without notice