



Welcome to Your New Home!



General

- Ceiling Height 2,700mm (9ft)
- LED Lights Throughout
- Ducted Heating and E-Cooling
- Solar Hot Water System
- Blinds
- Driveway
- Concrete Letterbox
- 3 Sided Fence
- Front and Rear Landscaping
- Clothesline



Kitchen

CABINETRY

- Laminate Cupboards
- 20mm Stone Benchtop
- 3 Set Cutlery Draws

APPLIANCES

- Technika 900mm Cooktop
- Technika 900mm Oven
- Technika 900mm Rangehood
- Technika Dishwasher

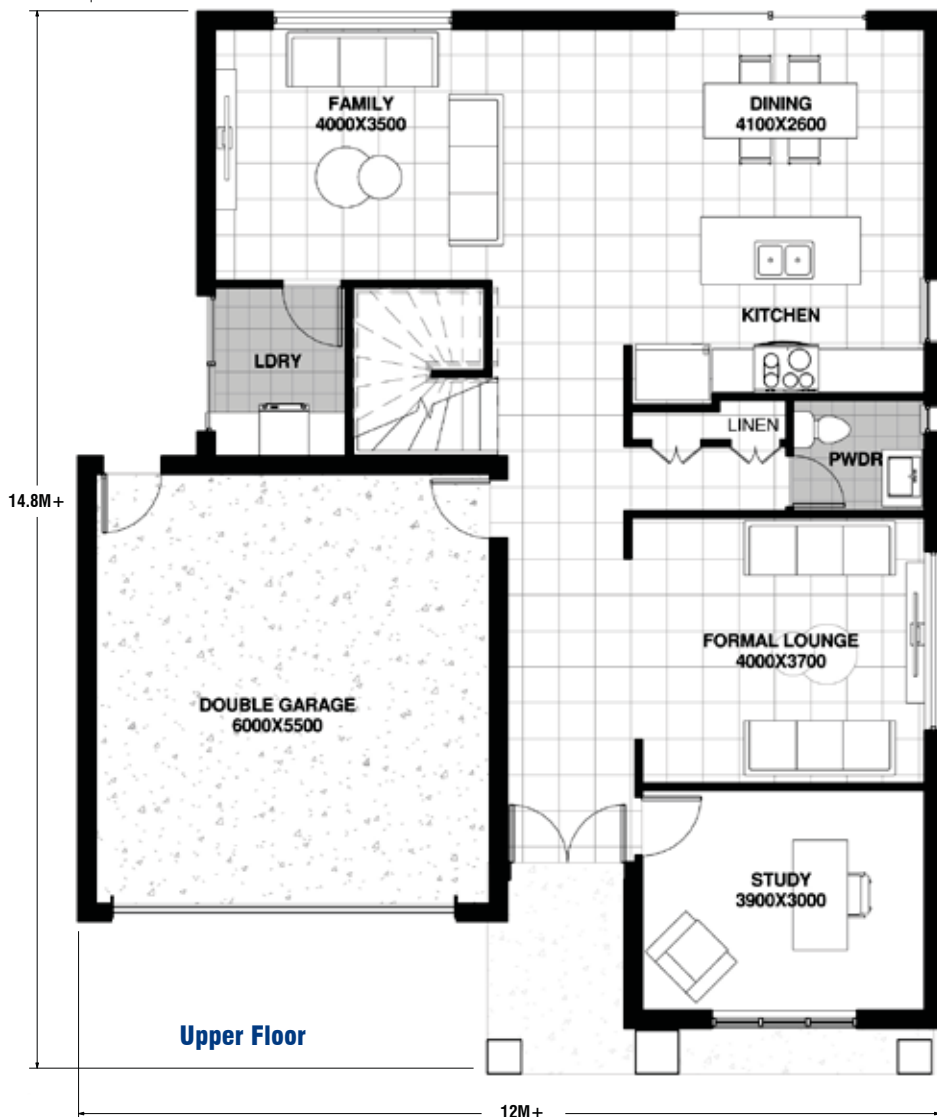
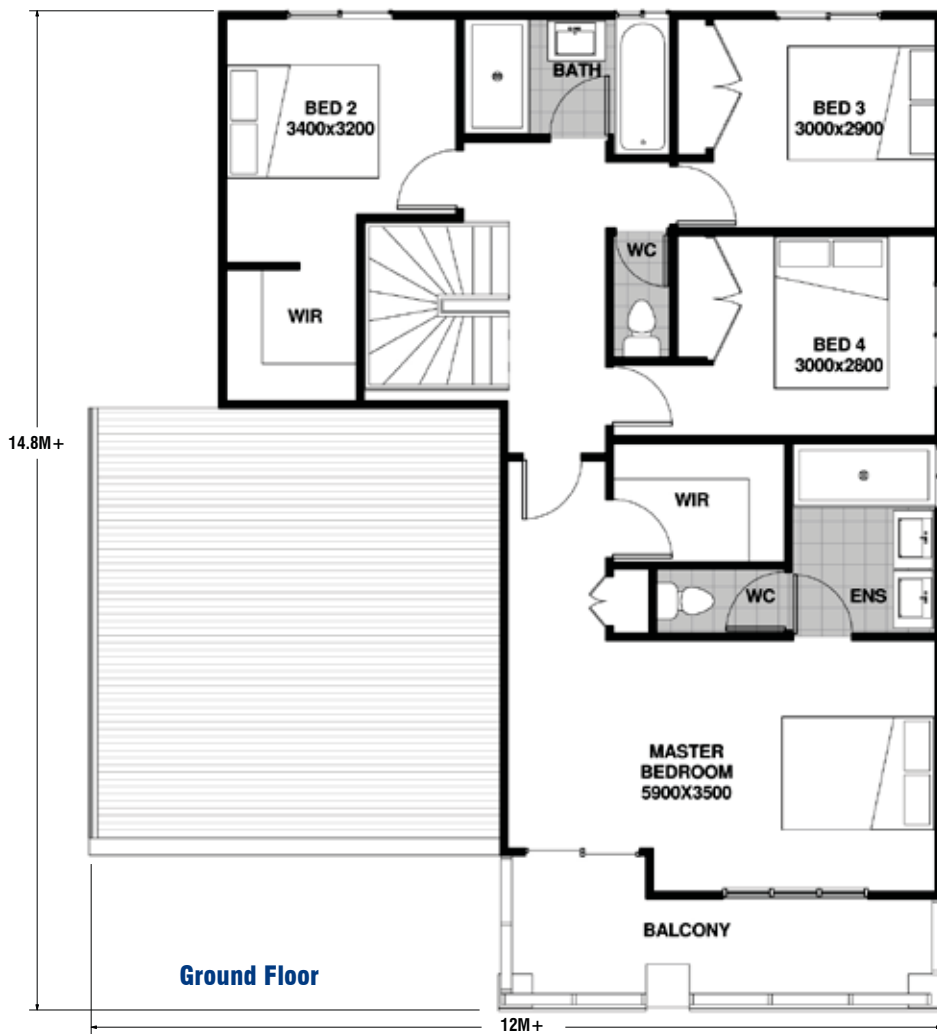
FLOORING

- 12mm Floating Floorboards



Bathroom

- 1675mm Bathtub
- Shower Rail
- Wall Mixers
- Basin Mixers
- Dual Flush Toilets
- Polished Edge Mirrors
- FLOOR & WALL COVERING**
- Ceramic Tiles
- Polymarble Showerbase
- 20mm Stone Benchtop



Heathmont 28

**FITS MINIMUM LOT
14M x 28M**

| | | | |
|--|---|--|---|
| | 4 | | 2 |
| | 2 | | 1 |

| | |
|---------------|--------------|
| WIDTH | 14M + |
| LENGTH | 20M + |

AREAS: m²

| | |
|--------------|-------------------------|
| TOTAL | 260m² |
|--------------|-------------------------|

AREAS: sq

| | |
|--------------|----------------|
| TOTAL | 27.97sq |
|--------------|----------------|

***Disclaimer:**

This information has been carefully compiled and is not intended to be treated as a warranty or promise as to the correctness of the information. Interested parties should undertake independent enquiries and investigations to satisfy themselves that any details herein are true and correct. Figures, Images and information may be subject to change without notice this also includes any floor plan and elevations designs and images and front facade images that may be subject to change without notice due to land developer/estate guideline approval.